

Access Management Solution

Making the complex simple





"In 2023 Gartner predicts that Zero Trust Network Access will be the fastest-growing network security market segment worldwide".

Source: Gartner



Access Management Solution part of the SecurEnvoy Zero Trust Access Solution

Businesses around the world, from SMEs to global brands, are facing an increasing volume of security threats and mounting compliance fines. With remote working increasing and a challenging economic environment, the pressure on business and local governments' IT departments to provide effective protection has never been greater - or more critical. Combine this with a significant skills shortage in the sector, demand is growing for simple solutions that work.

At SecurEnvoy, our Access Management Solution allows organisations to provide verifiable trust in every single transaction they perform by combining three core identities: the **user**, the **device** and the **location** they are working from.

This simple but effective approach helps to maximise protection for your business or organisation, mitigates risk, ensures compliance and defends vital intellectual property and business assets.

From the experts

SecurEnvoy, at the cutting-edge of innovation, led the way in providing simple-to-implement Multi Factor Authentication (MFA) tools. Today we are applying those same principles in supplying an integrated Access Management Solution that is both easy to implement and provides an intuitive friendly end user experience. A platform created by the experts, fit for the challenges of today and the future.

The SecurEnvoy Access Management Solution

SecurEnvoy's Access Management Solution is all about making the complex simple.

Our solution is built around a Single Sign On (SSO), Multi Factor Authentication (MFA) and active identity database supported by a robust, fully integrated Universal Directory (UD) as the Single Source of Truth (SSOT).



Overview

Benefit from a Zero-Trust Approach

Our Access Management Solution meets the challenge of managing user access across a wide range of systems and applications. As the first step in your zero-trust approach to security, the platform ensures that only authorised users have access to the information they need, when they need it. The Access Management solution will:

Streamline access to applications by users – regardless of device or location

Secure employee, partner and customer data easily through a single platform

Grant and revoke access when needed – ensuring data compliance

Reduce administration overheads from help desk calls and password reset requests

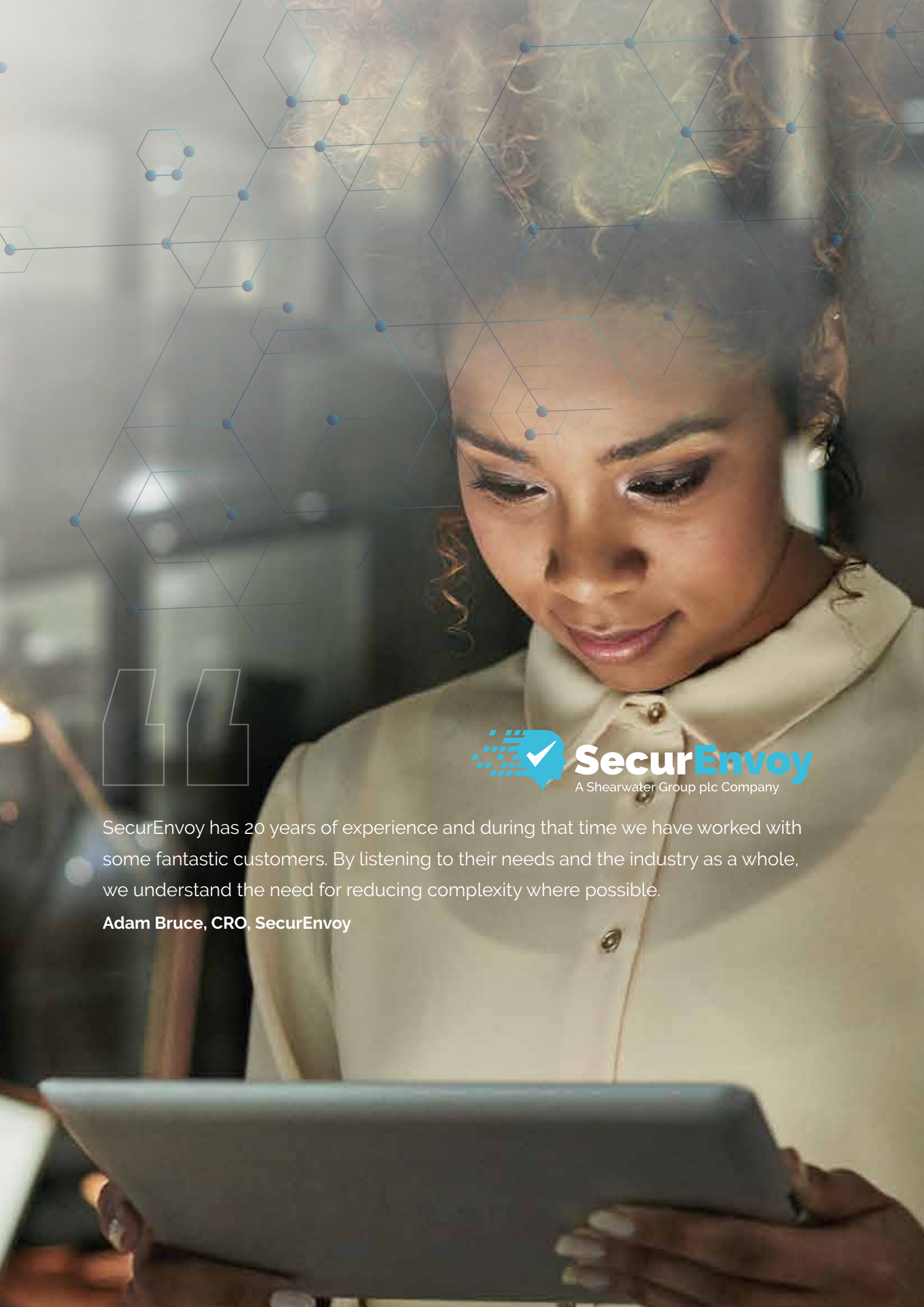
Improve productivity for users and IT staff and reduce resource time and costs

Mitigate risk of unauthorised access and aid regulatory compliance



With SecurEnvoy, we have flexibility and simplicity – you don't have to explain it to people. It just works for them.

Nigel Lyons, IS Manager, SHS Group



SecurEnvoy
A Shearwater Group plc Company

SecurEnvoy has 20 years of experience and during that time we have worked with some fantastic customers. By listening to their needs and the industry as a whole, we understand the need for reducing complexity where possible.

Adam Bruce, CRO, SecurEnvoy

SecurEnvoy Access Management Core Features

The SecurEnvoy solution extends Access Management to a new level. A unique end-to-end platform, built around a Universal Directory as a Single Source of Truth (SSOT).



Universal Directory

Providing centralised control and access, the SecurEnvoy Universal Directory (UD) stores and manages user identities across multiple systems, applications and services. User identities are unified across the entire infrastructure to provide a single reliable source of truth.

Scalable and flexible, you can add and remove user repositories and directories as needed.

Single Sign On (SSO)

The solution provides Single Sign On (SSO) to applications wherever users are working:

- Simple User Access with one click to cloud, mobile and legacy apps
- Straightforward security control for the IT Team
- Dynamic Application On-Boarding
- Full Radius support for simple integration of on-premise technologies

Adaptive MFA

A wide range of flexible authentication methods:

- Smartphone OTP Apps, SMS, TOTP
- Hardware Tokens, USB Tokens, VoiceCall
- Email
- Full Biometric support
- "Passwordless" authentication

Core Features (cont.)

Conditional Access

Limit access to only those users (employees, partners or customers) that need it, based on their role, device, date and time of access and location.

- Create access policies per application or point of ingress to determine if users are allowed access and what authentication method is required.
- Dynamically adapt access requirements based on a wide range of real-time signals.

Location-Based Authentication

Provide additional levels of security and safe zones to meet industry compliance and protect against identity fraud.

- Geo-fencing for controlled access to critical applications and safe zones for remote workers.
- Ensuring data sovereignty within a specific country.

Securing Legacy Applications

A complete solution across your business – providing integration and additional security for legacy applications and MFA applied at logon before resources are accessed.

- Desktop and Server logon with agents.
- RADIUS authentication and remote access via VPN for perimeter security.
- MFA for IIS-based web applications.

Passwordless Authentication

Passwordless authentication is becoming the popular way of improving security and compliance, using biometrics or hardware tokens.

- Improve the user experience and reduce help desk costs.
- Choose biometrics or hardware tokens for a range of platforms and devices.

User Access Reporting

Our Access Management solution provides a centralised view of who is accessing systems at any given time.

- Monitor identity and activity of users against prescribed permissions, credentials and controls.
- Generate comprehensive reports and audit trails.

Customisation

Align your Access Management solution to your brand ensuring familiarity for your workforce, partners and customers.

- Customise the interface to match your company or organisation branding colours and add logos.
- Languages available: English, French, German and Spanish.

Our solution

The SecurEnvoy Access Management Solution

The SecurEnvoy Access Management Solution allows organisations to provision employees with secure access to applications, data and resources.

Security and intelligence by design allows organisations to leverage the platform to reduce complexity, increase visibility and control of user access and activity.

Through the simple, intuitive management console, the system administrator can integrate and synchronise multiple user repositories with the SecurEnvoy Universal Directory (UD). SecurEnvoy UD removes the overhead of multiple directory management by providing a central source of truth.

A wide range of access integrations can be provisioned quickly and easily from the central management console. Full support is included for:

- + Public Cloud Applications
- + Web Portals
- + Radius
- + Desktop & Server Logon Agents

Once databases have been synchronised and applications integrated, users can be rapidly deployed with a wide range of authentication methods:

- + Smartphone OTP App (Android & IOS)
- + Smartphone PUSH Notifications (Android & IOS)
- + Tablet AppPush
- + Passwordless
- + SMS Real-Time
- + OTP Hardware Token (Credit Card Form Factor)
- + Biometrics
- + USB
- + Desktop App (Windows & OSX)

Simple flexible deployment

SecurEnvoy's Access Management Solution can be deployed across a range of scenarios to suit any business.



**SaaS
Hosted**

+



**Managed Service
Provider (MSP)**

+



**On-Premise
Data Centre**

+

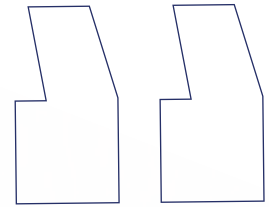


**Private
Cloud**



Alongside the public SaaS offering, our agnostic deployment approach allows implementation into any cloud provider or data centre, in any region, fully supporting customer requirements relating to data sovereignty and data boundary regulations.

Phil Underwood, CIO



Our employees can securely access our applications and networks allowing them to carry on working in the same way as if they were in the office. At such a challenging time, businesses like Wates are looking for flexibility from trusted suppliers to allow us to keep working as effectively as possible. SecurEnvoy has recognised the impact that this pandemic is having for people and companies alike and I have been impressed with how well they have responded.

Matt Mann, Group Head of IT Operations, Wates Group

The seamless integration of SecurEnvoy's solution into our existing systems made the deployment effortless. It maintained the security and integrity of our data while increasing the service's ability to support remote working.

Mark Ash, ICT Project Team Leader, Staffordshire Fire and Rescue



Benefits At a glance

- + A simple, streamlined Access Management Solution for today's security challenges.
- + Quick to deploy, simple administration and intuitive user experience.
- + Leverage the Dynamic Application On-boarding Wizard to rapidly provide Single Sign-On (SSO) support for new or custom cloud applications.
- + Enable Multi-Factor Authentication (MFA) for on-premise technologies such as VPN and RDP via built-in Radius support.
- + Choose from a wide range of authenticators, from Apps for both Mobile Phone and Desktop, to SMS and Hardware Tokens to ensure all user personas are covered with MFA.
- + Enforce biometric authentication for additional security levels and identity assurance.
- + Ability to turn on Passwordless authentication for users enabling a simplified user experience.
- + Configure both simple and complex Conditional Access policies to enforce Zero Trust access principles.
- + Create designated explicit Safe Zones for remote access to ensure data compliance and sovereignty.
- + Available as Vendor Hosted SaaS platform, a container to be deployed either in Private Cloud Environments (AWS, Azure, Google) and On-Premise. Also available as a fully managed service via SecurEnvoy MSP partners.
- + Simple, flexible, cost effective licensing model.
- + Unparalleled support from experts, ensuring a trouble-free administration experience.

Into the future

The SecurEnvoy Access Management Solution

The threat landscape for businesses, local governments and other organisations is constantly evolving and changing shape. So at SecurEnvoy, we are working on tomorrow's solutions, today.

Tomorrow's world is one where enhanced biometrics will be ever more integrated into today's elements of identity and access management. Combining these enhanced biometrics with a series of intelligent location identifiers will help security and verifiable trust reach a totally new level.

It is all part of our dynamic and ongoing culture of innovation.

The SecurEnvoy Zero Trust Access Solution

The Zero Trust Access Solution allows organisations to provide verifiable trust in every activity they perform. By providing the identity of the user, the device and the data they are working on you can monitor and prove exactly who is doing what at any time.



Security solution innovators

SecurEnvoy have been working hard since 2003 to design security solutions that take advantage of cutting edge identity technologies. It's this spirit of innovation which remains the driving force behind our success today and SecurEnvoy provides trusted and relied-upon access management and data discovery solutions across five continents to millions of users.

With our channel and partner centric approach, we continue to grow rapidly with customers in Banking, Finance, Insurance, Government, Manufacturing, Marketing, Retail, Telecommunications, Charity, Legal, and Construction. SecurEnvoy is a wholly-owned subsidiary of digital resilience group, Shearwater Group plc, listed on the London Stock Exchange.



Let's Talk

Talk to our experts today for a No-hassle,
No Obligation Consultation.

 support@securenvoy.com

 [securenvoy.com](https://www.securenvoy.com)

 [linkedin.com/company/securenvoy](https://www.linkedin.com/company/securenvoy)

 twitter.com/securenvoy